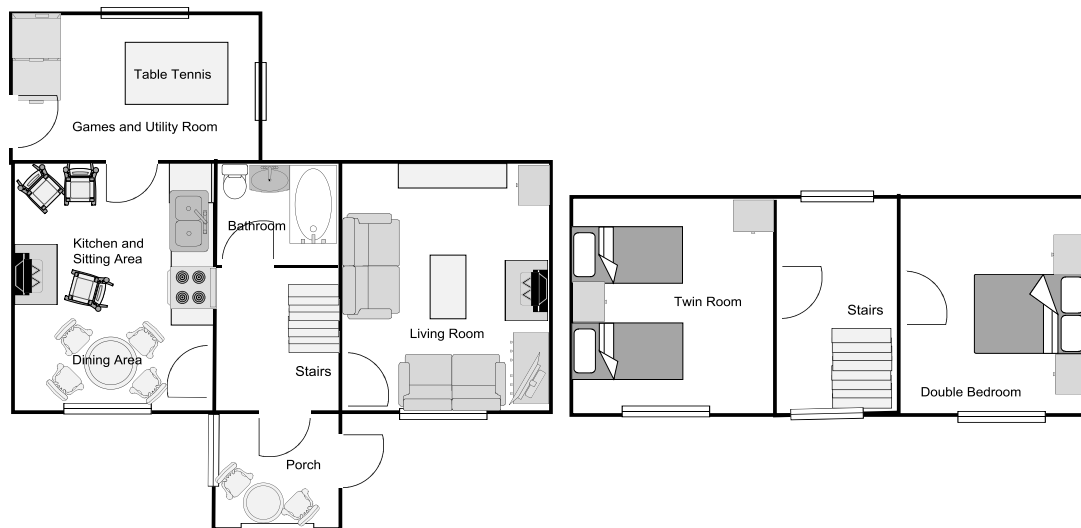


South 10 Oran na Mara

Rate Band C ~ Saturday Arrival
2 Bedrooms ~ Sleeps 5/6
1 Double bed ~ 2 Single beds ~ Double Sofa Bed
Linen & Towel Service
No Dogs & No Smoking
STB Grading ~ 3 Stars



Plan of Oran na Mara (not to scale)



Oran na Mara is a traditional croft house, sitting in its own secluded garden just five minutes walk from Kilchoan village store, and offering stunning views down the Sound of Mull. It has been tastefully upgraded to provide modern facilities while retaining a wealth of charm. Character features include varnished wood flooring downstairs, stripped wooden doors throughout, painted shutters upstairs, a wood burner in the kitchen and comfortable lounge with wood burner. Facing south-east, it catches sun most of the day, and there is an attractive sun room where the beautiful views can be enjoyed on days when it is too cool to sit outdoors.

Ground floor: Sunroom with good views, leading into the hall, to the right comfortable lounge with a wood burner, bathroom with bath and shower, to the left, living and kitchen with wood burner. At the back of the house there is a large games and utility room.

Upstairs: Double bedroom with shuttered window; twin bedroom with shuttered window.

Facilities

Kitchen: Freezer, Fridge, Microwave, Hob & Electric Oven.

Games/Utility Room: Washing Machine, Tumble Drier, Table Tennis, TV, Board Games.

Bathroom: Bath with Electric Shower & Screen, Toilet, Basin, Ceiling light/heater, Light/shaverpoint.

Heating: Storage Heaters, 2 Multi-fuel stove.

TV & Audio: Flat screen TV, DVD, CD player.

Enclosed Garden: Deckchairs, Sun Lounger, Garden Seating

Parking - the drive at Oran na Mara is steep and we advise that, after unpacking, clients leave their cars at the bottom of the drive just inside the gate. Please ensure the gate is always kept closed to keep livestock out!

The back door will be unlocked and the key will be inside on the kitchen table, along with the key for the front.

Most **Mobile** reception is general good in Kilchoan; there is a phone box opposite the church as you come into the village.

The normal day of arrival is a **Saturday** and the property is available from **4.00pm** on the holiday start date until **10.00am** on the finish date.

Please read the **meters** on arrival and departure: the costs per unit will be clearly displayed in the house. There is cheap off peak heating and hot water. The hot water, heating (if necessary) and refrigerator will be on for your arrival. Leave a cheque or cash in payment for the electricity to Amanda Davidson.

Stoves - firelighters and kindling will be provided to take you over the weekend. Wood is provided, but from October to April is charged at £20 per week per booking.

Linen & Towel Service is available for this house, please refer to the linen form. In addition, tea towels, kitchen hand towel and bathmats will be provided. There is no bedding supplied with the cot.

No Dogs

You are respectfully reminded that any damages must be reported and paid for and properties must be left in a clean and tidy condition prior to departure.

We do not normally call on you during your stay here as we have found from past experience that timing for this can tend to be difficult.

If you have any problems phone your House Manager, Shelia Wood on mobile 07870316102 or home 01972510714 or call the Steading Holidays office.