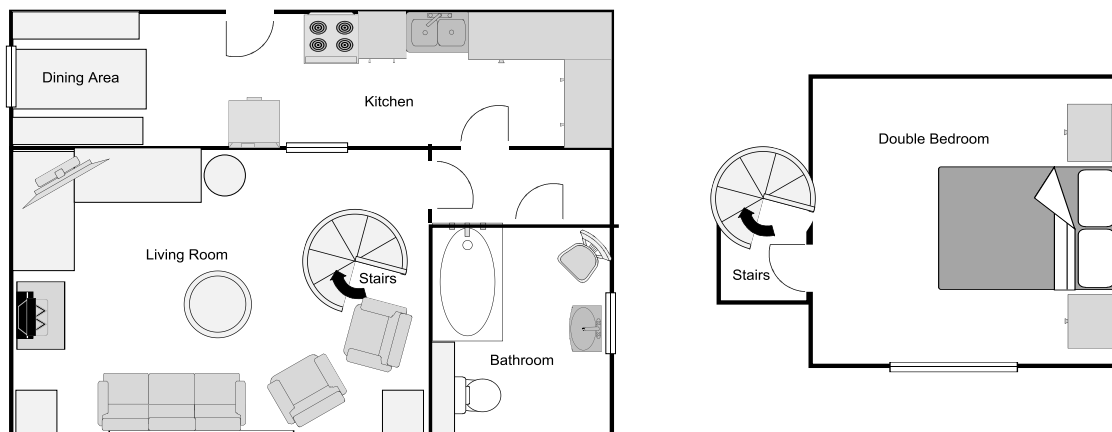


South 1 The Byre

Rate Band E ~ Saturday Arrival
1 Bedroom ~ Sleeps 2
1 King Size Bed ~ Linen inclusive
Hydro & Fuel inclusive ~ Pets Welcome
STB Grading ~ 3 Stars



Plan of The Byre (not to scale)



The Byre, built in 1886, has now been creatively refurbished and beautifully decorated by its owners producing a highly personal touch. The homely, spacious living room is warmed by a Morso Squirrel stove and from here the spiral staircase coils its way to the double bedroom.

If the weather doesn't permit the exploration of the charming village of Kilchoan and the local landscape, the 40" TV and DVD player allows comforting entertainment on blustery nights. Outside the premises a patio area allows you to enjoy the mature garden with fruit trees and a burn weaving through it. There are wonderful views over the Sound of Mull and surrounding area.

Ground floor: kitchen with dining area, large bathroom, living room with high ceiling and multi-fuel stove. Spiral staircase leading to bedroom with king size bed.

Facilities

General: Use of wireless internet connection in the office.

Kitchen: Freezer, Fridge, Microwave, Gas Oven, Washing Machine.

Bathroom: Bath with shower attachment.

Heating: Multi-fuel stove and Halogen heaters.

TV & Audio: 40" TV, DVD, Radio, CD Player.

Garden: Patio with garden furniture and BBQ.

Key for the Byre: the front door will be unlocked for your arrival and the **key** will be left on the dining table.

Mobile reception is general good in Kilchoan and there is a phone box opposite the church. There is internet access in the Steading Holiday's Office.

The normal day of arrival is a **Saturday** and the property is available from 4.00pm on the holiday start date until 10.00am on the finish date. The house will be open for your arrival and the key left on the dining room table.

Stove: Enough firelighters, coal and logs will be left in the house to take you over the weekend. Additional coal and logs will be left at the side of the house for your use.

Electricity is inclusive of the price.

Linen Service is inclusive of the price; the King-size bed will be made up for your arrival with your bath and hand towels.

Dogs are welcome, but we ask owners to comply with the following: dogs to be kept under strict control at all times; not allowed in the bedrooms or on soft furnishings and not left unattended in the house. All dog faeces to be removed from the garden and immediate surrounding areas.

You are respectfully reminded that any damages must be reported and paid for, and properties must be left in a clean and tidy condition prior to departure.

If you have any problems please call in at the Steading Holiday Office, or the Steading (where the owners Jacqui and John Chapple live).

Steading Holidays ~ www.steading.co.uk ~ Tel. No: 01972 510 262