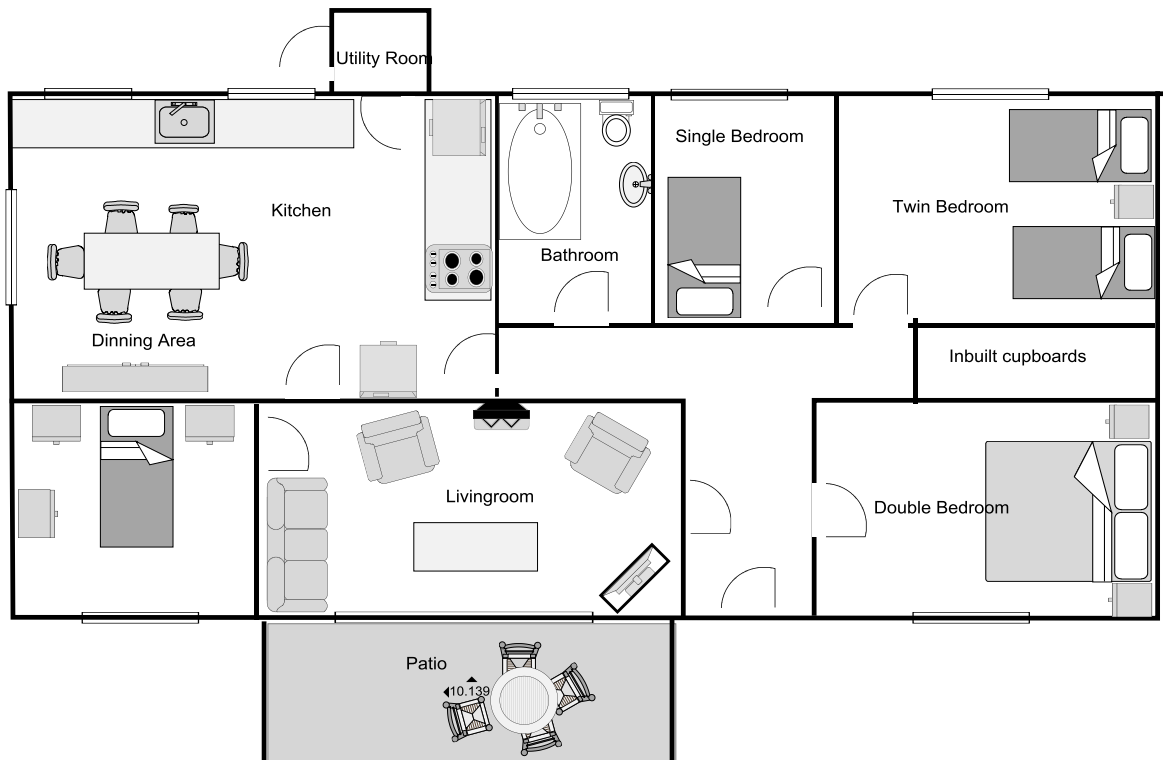


North 4 Ceol Na Mara

Rate Band C ~ Sunday Arrival
4 Bedrooms ~ Sleeps 6
1 Double Bed ~ 4 Single Beds ~ No Linen Service
Cot & High Chair
Dogs Welcome
STB Grading ~ 3 Stars



Plan of Ceol Na Mara (not to scale)



Ceol na Mara is located on the North coast of Ardnamurchan. Its position looks out over the sea to the Small Isles - perfect for an evening BBQ on the patio while watching the sun set over Muck, Eigg and Rhum. Recently refurbished with a new kitchen, laminated flooring and storage heaters, it has a homely living room has a cosy, open fire. With miles and miles in every direction of untamed, highland landscape - mountains, moors, shoreline and lochs - it's the perfect escape.

Facilities

General: Pay Phone.

Kitchen: Freezer, Fridge, Microwave, Electric Oven. Washing Machine

Bathrooms: Bath with Electric Shower.

Heating: Storage Heaters and open fire in the living room

TV & Audio: T.V.& Video , SKY, CD Radio.

Enclosed Garden: Garden Furniture, BBQ.

There is a house **pay phone** & the number is 01972 510 323. **Mobile** reception in the Kilchoan area is good, but patchy else where on the peninsula.

The normal day of arrival is a **Sunday** and the property is available from **4.00pm** on the holiday start date until **10.00am** on the finish date.

Open Fire: enough firelighters, wood and coal will be left to take you over the weekend; more can be bought from the Ferry Stores, Kilchoan. Tel: 01972 510 201

Please read the **meter** on arrival and departure, and leave cash or a cheque made payable to Mrs Attridge. The cost per unit will be clearly displayed in your house. The hot water, heating (if necessary) and refrigerator will be on for your arrival.

There is no **Linen Service**. You will need to bring duvet covers, sheets, pillowcases, towels, tea towels and bath mat.

Dogs are welcome, but we ask owners to comply with the following: dogs to be kept under strict control at all times; not allowed in the bedrooms or on soft furnishings and not left unattended in the house. All dog faeces to be removed from the garden and immediate surrounding areas. Please also bear in mind that Kilmory is a crofting township, and therefore it is imperative that dogs must be kept under strict control if sheep are grazing nearby.

You are respectfully reminded that any damages must be reported and paid for and properties **must** be left in a clean and tidy condition prior to departure.

If you have any queries during your stay please do not hesitate to phone the House Manager S. Cheadle on 01972 510 760, 01972 501 000 or contact our Steading Holidays office.

Steading Holidays ~ www.steading.co.uk ~ Tel. No: 01972 510 262