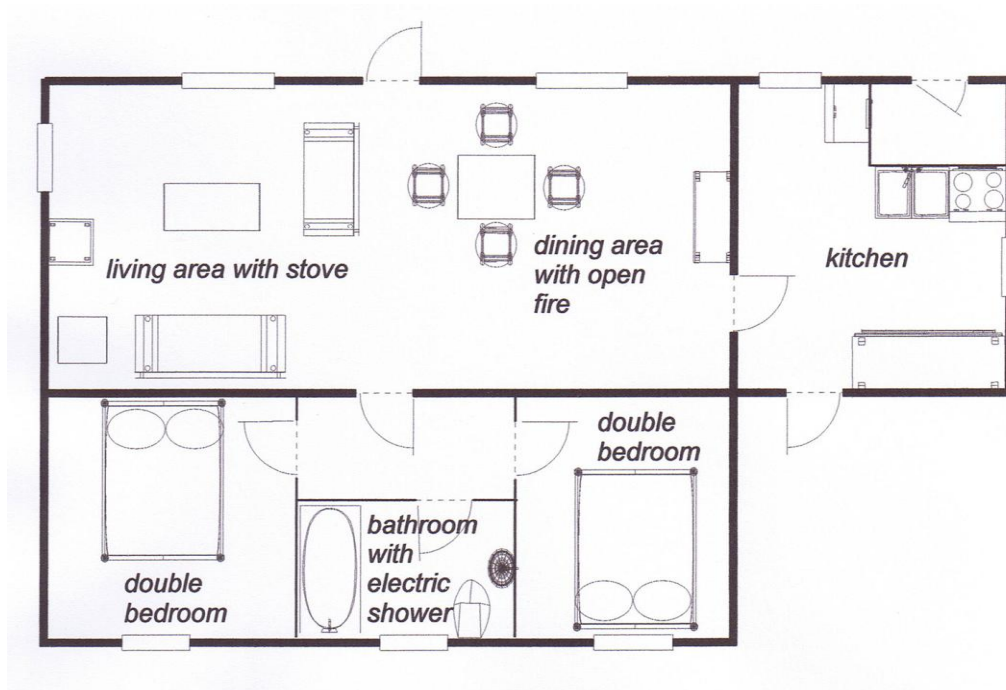


North 3 Coldstream Cottage

Rate Band D ~ Sunday Arrival
2 Bedrooms ~ Sleeps 4
2 Double Beds ~ Linen & Towel Service
Cot & High Chair
No Dogs



Plan of Coldstream Cottage (not to scale)



Coldstream cottage is nestled against the hillside in the remote village of Swordle. Located on the North coast of Ardnamurchan it is a twenty minute drive from Kilchoan. From its elevated, exposed position, the house allows dramatic views to the Isles of Muck, Eigg, Rhum and the Cuillins of Skye beyond. The cottage is tastefully decorated and despite its open plan living and dining area stays snug due to an open fire and a multi-fuel stove.

Its position makes it ideal for hill walkers. Several beaches lie within walking distance. Not far from the front door are the peaceful, sands of both Swordle and Achateny beach. A longer walk to the east will bring you to the unique "singing sands" of Gortan Bay where bewildering, enchanting sounds can be heard rising from the shore with every step. Swordle cave is also tucked into the shore below Coldstream for the adventurer inside you.

Kitchen, leading to dining / living area with an open fire and multi-fuel stove; two double bedrooms with night storage heaters and bathroom.

Facilities

General: Pay Phone.

Kitchen: Freezer, Fridge, Microwave, Electric Oven, Washing Machine, Tumble Drier

Bathroom: Bath with electric shower

Heating: Storage Heaters, Electric Heaters, Open Fire and Wood Burning Stove

TV & Audio: TV & SKY, CD, Radio

Wild enclosed garden: Garden Furniture

There is a private water supply, with an ultra-violet purification system.

The house **pay-phone** number is 01972 510 375. **Mobile** reception in the Kilchoan area is good, but patchy else where on the peninsula.

The normal day of arrival is a **Sunday** and the property is available from **4.00pm** on the holiday start date until **10.00am** on the finish date.

Stove and Open Fire: Enough firelighters and coal will be left to take you over the weekend; more coal is left available for your use, at the back of the house. You can buy wood, coal and firelighters from the Ferry Stores in Kilchoan. Tel: 01972 510 201

Please read the **electricity meter** on arrival and departure, and leave a cheque or cash in payment made out to Miss C. Rudd. The cost per unit will be clearly displayed in the house. The hot water, fridge/freezer & (if necessary) heating will be on for your arrival.

There is a **Linen & Towel Service** available for this house. Please contact Steading Holidays for further details. In addition, tea towels, kitchen hand towel and bathmats will be provided, but there is no bedding supplied with the cot.

The owner does not allow **dogs**.

There is access to the beach at the front of Coldstream but please pay due respect to any tenants of Bay House, at Swordle.

You are respectfully reminded that any damages must be reported and paid for and properties **must** be left in a clean and tidy condition prior to departure.

If you have any queries during your stay please do not hesitate to phone the House Manager, Lara Van de Peer, on 01972 510 767 or contact our Steading Holidays office.

Steading Holidays ~ www.steading.co.uk ~ Tel. No: 01972 510 262